

Doll House Child Wig

Catherine Mather © 2005



1 Draw hair line on dolls head with lead pencil



2 Fill in any top holes in head with paper, cover head with Glade wrap and secure with an elastic band at neck



3 Start gluing centre front hair line and all the way down to back neck, then placing the hair on the glue, try not to use too much glue as it will weep through, and show on the hair. Trim fringe at front a way



4 Glue and place the second piece of hair from ear to ear, glue one side at a time.



5 Glue and place the third hair piece from centre front to back neck, just as you did for the first section, but this time don't take the glue past the crown of the head, so you end up with a neat head of hair

6 Trim hair to the length you like

7 Add head band if desired, and glue under hair line

8 Add curly fringe to front hair line

9 Spray with hair spray to set in to position



Doll House Lady Curled Wig Catherine Mather ©2005



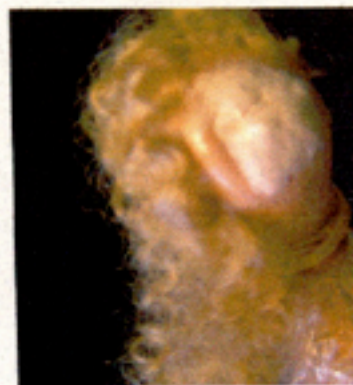
1 Draw hair line on dolls head with lead pencil also side part



2 Fill in any top holes in head with paper, cover head with Glade wrap and secure with an elastic band at neck



The hair used for this wig is mohair that has been permanent waved on size 14 knitting needles, it has been left to dry in the needles and then unravelled to give long wave lengths



3 Start gluing curled hair length to right side part line across front hair line and down to neck trying not to use too much glue as it will weep through. Leave remaining length of hair draped over the doll shoulder



3 Taken second half length glue to left side parting line and down front hair line extending glue to meet right hair at neck

4 With the third length of hair fill gap at the back of the wig.



Doll House Lady 1800's Wig Catherine Mather ©2005



1 Draw hair line on dolls head with lead pencil

2 Fill in any top holes in head with paper, cover head with Glade wrap and secure with an elastic band at neck



3 Glue from centre crown to hair line in a 1.5 cm width's ,place hair length in glue extending hair past the hair line . It does not mater if glue weeps through as the hair will be pulled back and will cover this glued area .

4 Repeat this process from ear to ear ,a cross the front hair line forming a second row



5 Pull all of the hair at the back of the wig up to the centre of the crown and stitch tightly in place



Pull all of the remaining front hair up and stitch in the same place as . Arrange hair by pull on the strands that have been tied up ,When you are happy with the effect twist the remaining hair in to a bun and stitch , If the bun is to large clip off some hair , above the stitching and try a gain repeat until you are happy with the size of the bun
6 Wind a small amount of hair around a thick sewing needle and spray with setting lotion ,when dry , unwind and split the curls ,glue the curls to the under side of the wig at the front side hair line .
7 Decorate with flowers

