

## GREENWARE

EYE OPENING



## PAINTING

### SKINTONE

OVER ALL WASH.....Seeleys Bisqtone 1.

### EYELASHES

Black. fine and of medium length.  
Outline eye opening top & bottom.



### EYEBROWS

1 part brow brown.  
1 part chestnut.



SHADOW EYEBROW

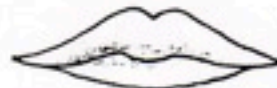
### LIPS

Accent lines



Shading

LIPS:.....POMPA.



### CHEEKS

Blushing pompa.

### NOSE & DOTS

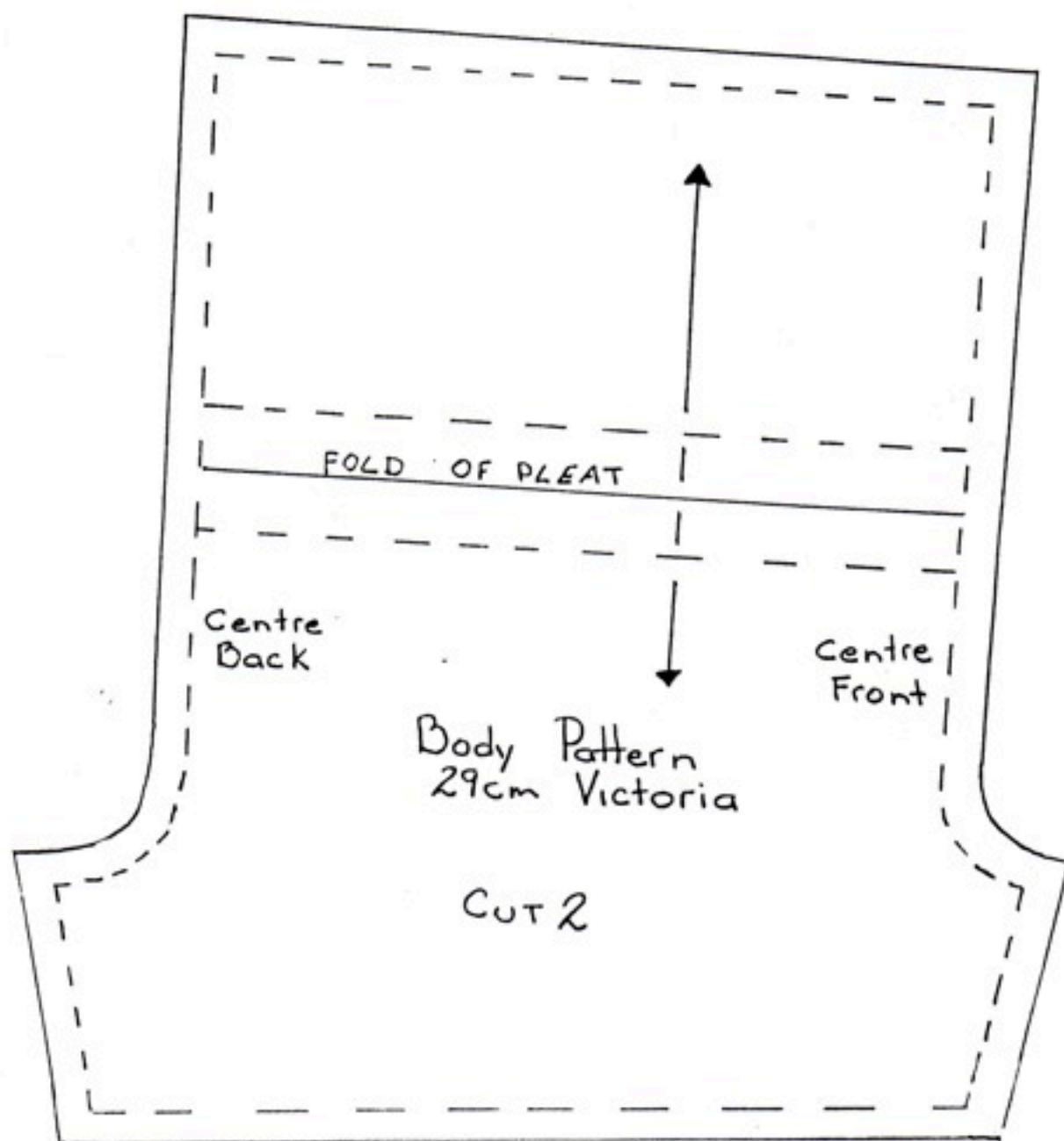
Pompa (Darker nose dots are applied within a lighter application from the previous firing).

## FINISHING HINTS

False eye lashes are applied to top eye lids.

# Cat & Co

PH (042)71 3302



# Victoria

## Body Pattern Instructions

Cut the body pattern out of medium to heavy weight calico.

Sew centre front seam and centre back seams, then leg seams.

Stitch top waist seams together matching CF. and CB. seams. Turn thru.

Sew pleat at low hip for draw string.

Turn up hems at lower leg for casing.

Trace porcelain leg opening on to cardboard cut out, and glue on to opening.

Insert body up into porcelain body, run glue around groove on porcelain and work the pleat over groove, pull up with draw string, stitch.

Follow the same procedure for legs.

String head and arms in one, run elastic from arm up in to head back down and through other arm. (I find a macrame bead and leather washer works well)

## Kiln position for Greenware

